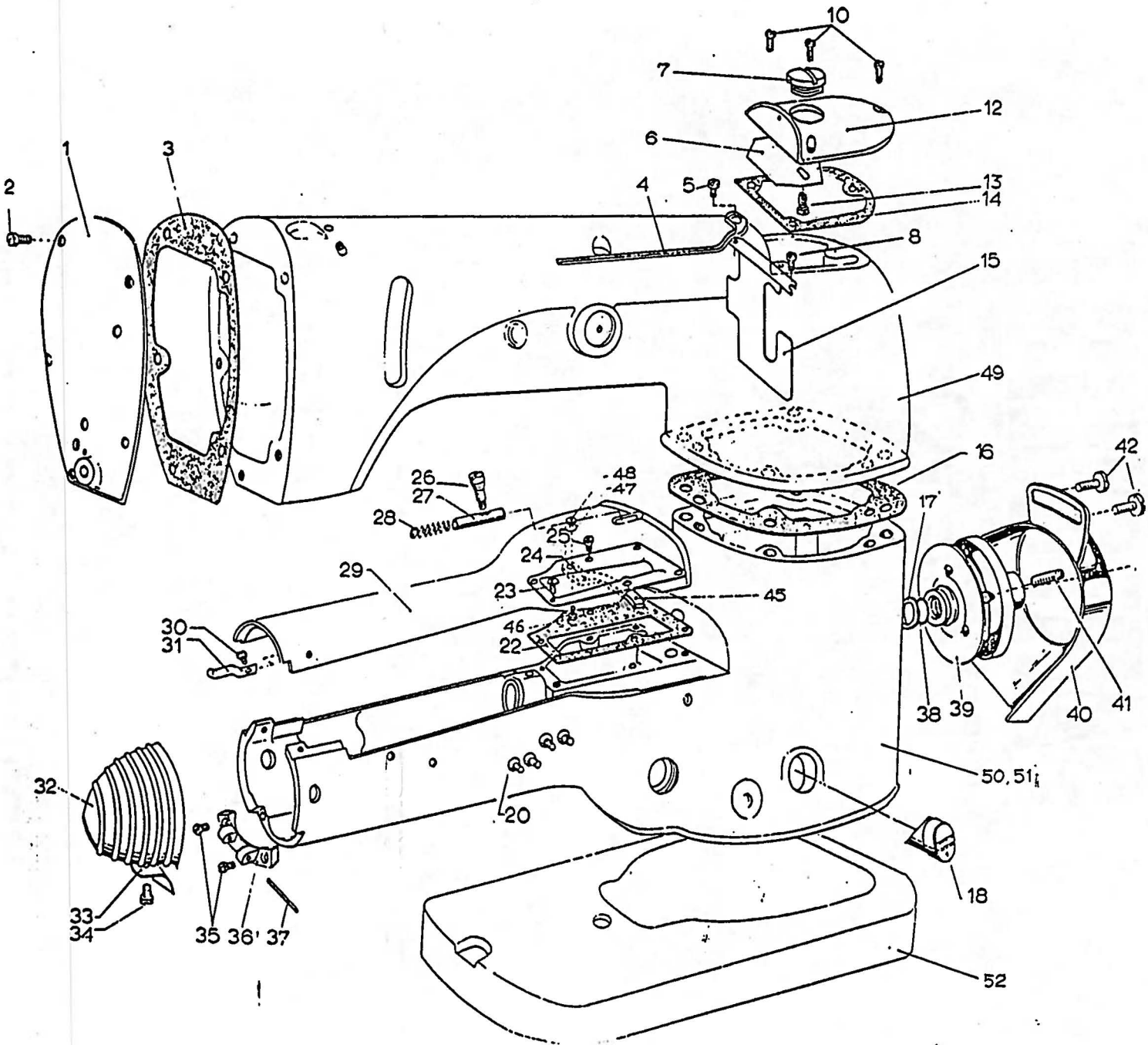


 *Kansai Special*

PARTS LIST

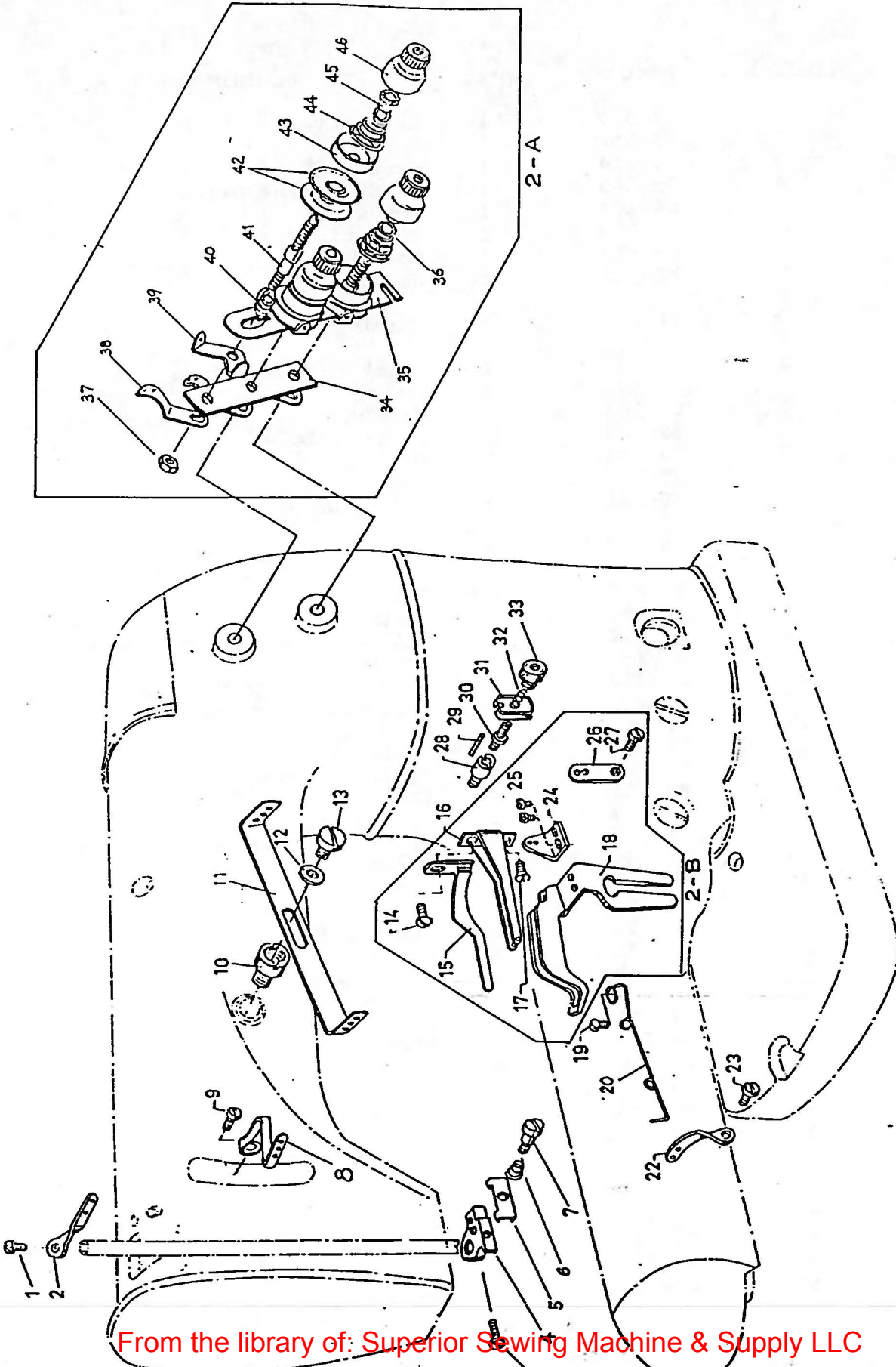
DVC-100

1. Housing components



Ref. No.	Part No.	Q'ty	Description
1	21-327	1	Head Cover
2	84-566	5	Screw
3	23-214	1	Gasket
4	35-268	1	Needle Lever Oiler
5	84-161	1	Screw
6	35-160	1	Oil Drip Plate
7	87-511	1	Screw
8	84-162	1	Screw
9			
10	84-566	3	Screw
11			
12	21-205	1	Crank Chamber Cover
13	84-575	1	Screw
14	23-204	1	Gasket
15	39-124	1	Baffle Plate
16	23-271	1	Gasket
17	75-327	1	Washer
18	39-211	1	Oil Sight Gauge
19			
20	85-673	4	Screw
21			
22	23-222	1	Gasket
23	84-362	1	Screw
24	21-512	1	Oil Reservoir Cover Plate
25	84-463	5	Screw
26	25-212	1	Cylinder Cover Bolt Knob
27	25-211	1	Cylinder Cover Bolt
28	79-196	1	Spring
29	21-517	1	Cylinder Cover B
	21-518	1	Cylinder Cover C
30	84-364	1	Screw
31	79-507	1	Spring
32	21-331	1	Cylinder End Cap
33	79-536	1	Spring
34	84-364	1	Screw
35	84-362	2	Screw
36	21-332	1	End Cap Hinge
37	21-333	1	Pin
38	23-197	1	O-Ring
39	69-204	1	Pulley
40	21-406	1	Belt Guard
41	84-763	2	Screw
42	84-571	2	Screw
43	69-204	1	Handwheel
44	84-861	3	Screw
45	23-359	1	Felt
46	84-362	1	Screw
47	75-468	1	Washer
48	86-211	1	Nut
49	22-101	1	Arm
50	22-112	1	Cylinder for 102A, 102C
51	22-111	1	Cylinder for 102P
52	22-121	1	Base

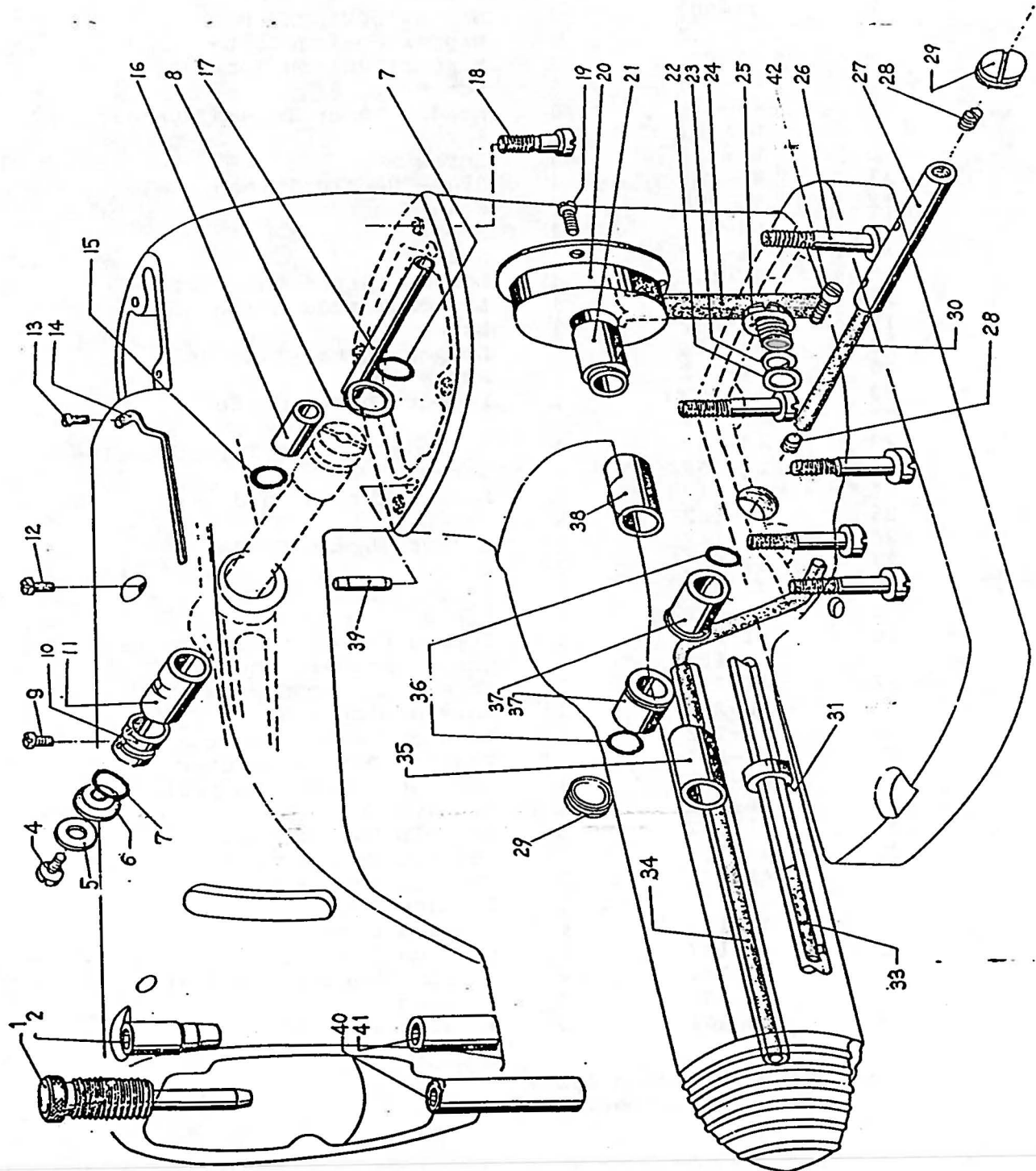
2. Thread eyelet components



Ref. No.	Part No.	Q'ty	Description
1	84-362	1	Screw
2	45-131	1	Needle Bar Thread Eyelet
3	84-361	1	Screw
4	41-303	1	Nipper Spring Base
5	45-142	1	Nipper Spring Plate
6	41-721	1	Nipper Tension Spring
7	84-171	1	Screw
8	45-118	1	Needle Lever Thread Eyelet
9	84-362	1	Screw
10	85-531	1	Screw
11	45-110	1	Frame Needle Thread Eyelet
12	75-388	1	Washer
13	84-564	1	Screw
14	84-363	1	Screw
15	47-148	1	Looper Thread Pull-Off
16	47-147	1	Looper Thread Guide
17	84-462	1	Screw
18	47-146	1	Looper Thread Take-Up
19	84-362	1	Screw
20	47-152	1	Looper Thread Guide
21			
22	47-162	1	Cylinder Looper Thread Eyelet
23	84-162	1	Screw
24	47-142	1	Looper Thread Guide
25	84-162	2	Screw
26	47-141	1	Looper Thread Guide
27	84-162	1	Screw
28	41-311	1	Spacing Stud
29	71-221	1	Pin
30	41-271	1	Thread Nipper Tension Post
31	41-201	2	Thread Nipper Disc
32	41-721	1	Thread Nipper Spring
33	86-251	1	Thread Nipper Nut
34	41-122	1	Tension Post Support
35	41-112	1	Tension Disc Separater
36	41-702	1	Tension Spring (Looper)
37	86-411	1	Tension Nut
38	41-117	3	Lead-In Thread Guide
39	41-115	3	Tension Thread Eyelet
40	41-131	3	Tension Post Ferrule
41	41-172	3	Tension Post
42	41-111	6	Tension Disc
43	41-107	3	Tension Disc Case
44	41-701	2	Tension Spring (Needle)
45	41-105	3	Ratchet
46	41-101	3	Tension Disc Case

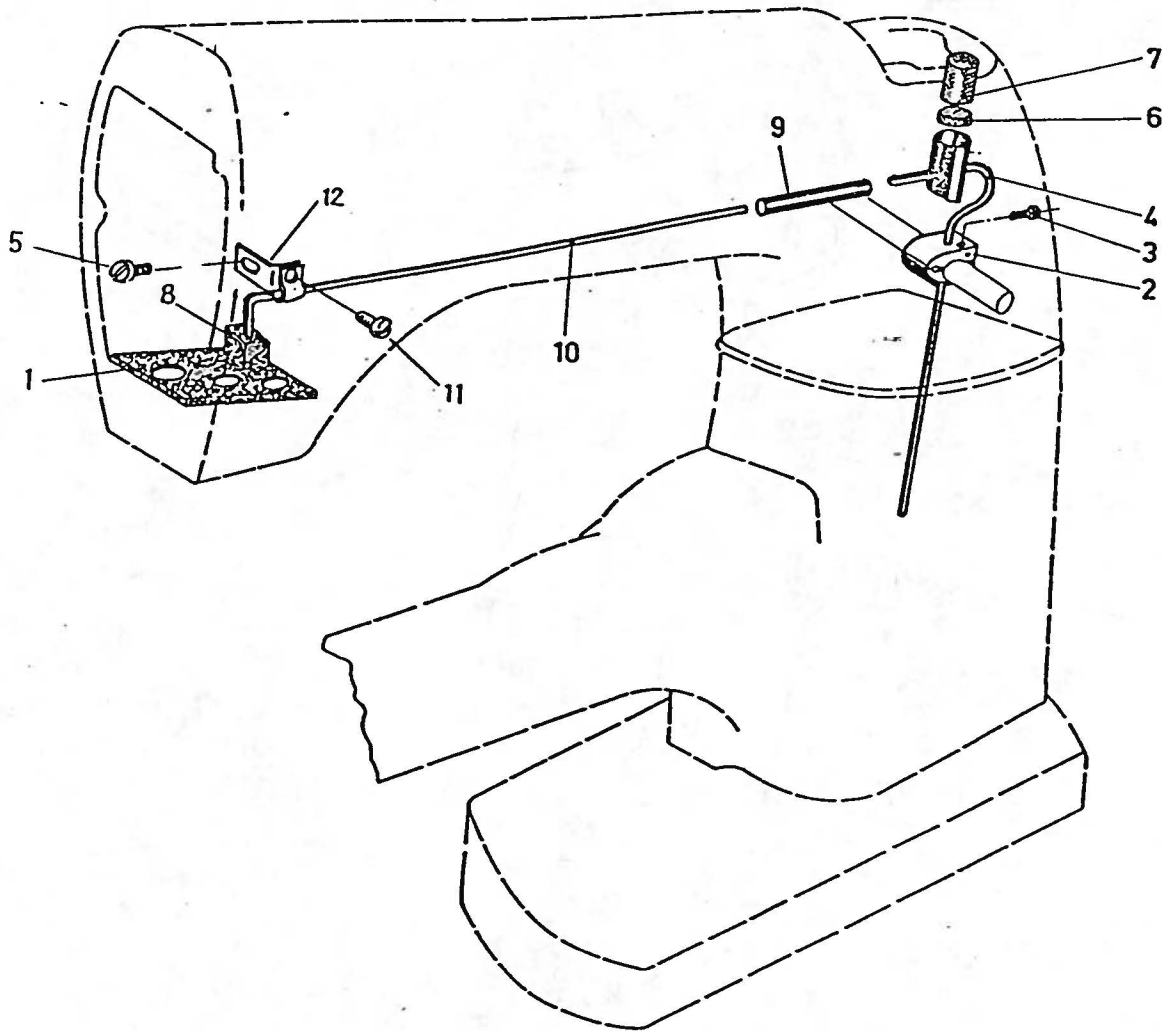
2-A Thread tension ass'y
2-B Cast-off support plate ass'y

3. Bushing components



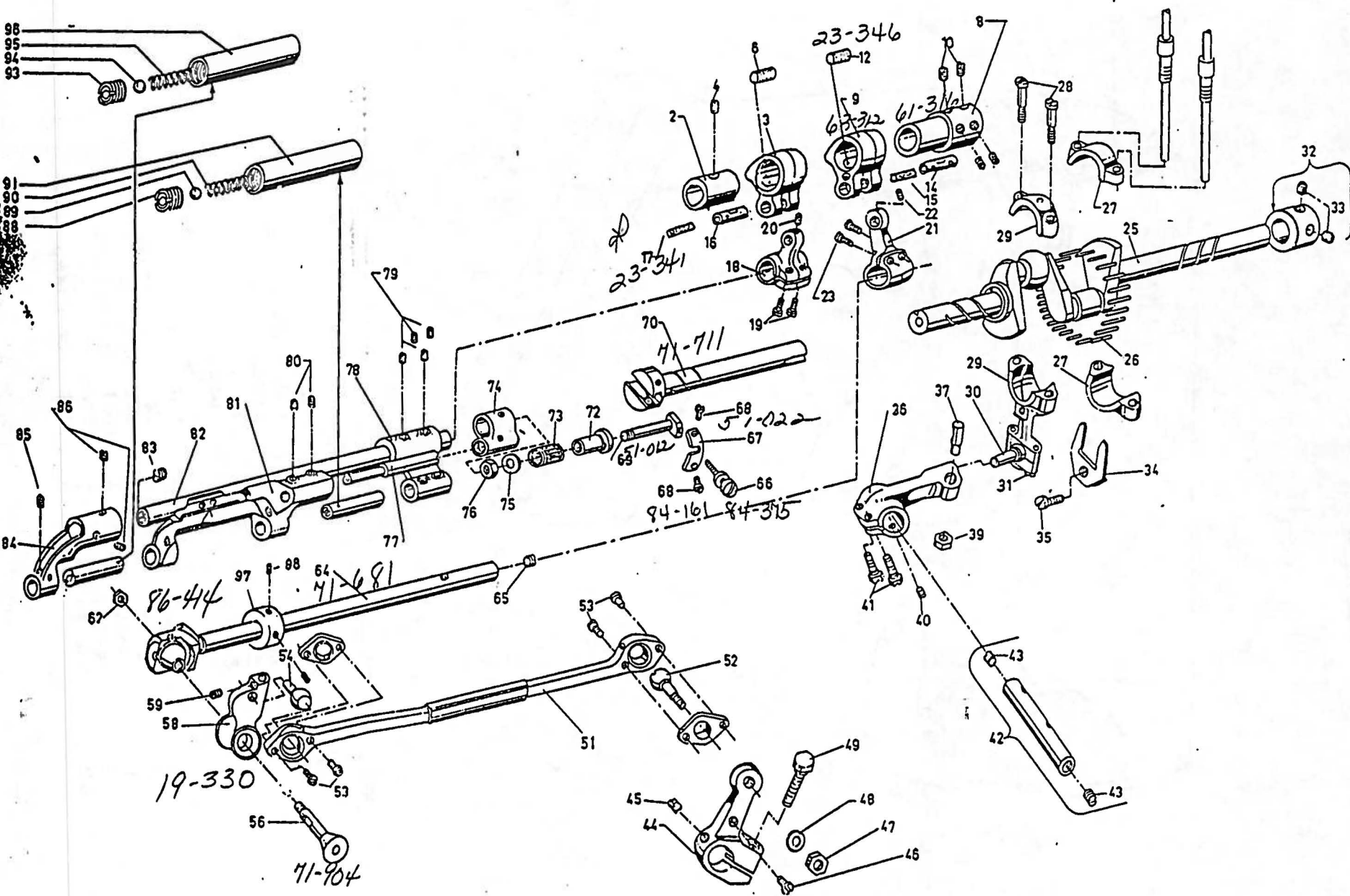
Ref. No.	Part No.	Q'ty	Description
1	85-761	1	Presser Spring Regulating Stud
2	81-174	1	Needle Bar Bushing
3	86-851	1	Nut
4	85-182	1	Screw
5	23-294	1	Gasket
6	39-107	1	Oil Seal Ring
7	23-195	2	O-Ring
8			
9	84-764	1	Screw
10	81-411	1	Needle Lever Shaft Stop Collar
11	81-113	1	Needle Lever Shaft Bushing
12	84-764	1	Screw
13	84-161	1	Screw
14	35-268	1	Needle Lever Oiler
15	23-189	1	O-Ring
16	81-252	1	Foot Lifter Lever Bushing
17	77-121	1	Tension Release Lever Shaft Pipe
18	87-661	4	Screw
19	84-566	3	Screw
20	69-303	1	Flange
21	81-117	1	Flange Bushing
22	75-470	1	Washer
23	23-300	1	Gasket
24			
25	85-521	1	Screw
26	87-661	5	Screw
27	71-682	1	Looper Drive Lever Shaft
28	84-711	2	Screw
29	87-811	2	Screw
30			
31	94-211	1	Oil Seal
32			
33			
34			
35	81-118	1	Main Shaft Bushing, Left
36	23-198	2	O-Ring
37	81-140	2	Bushing
38	81-118	1	Crankshaft Bushing, Middle
39	71-482	2	Dowel Pin
40	81-160	1	Presser Bar Bushing, Lower
41	81-175	1	Needle Bar Bushing
42	85-673	1	Screw

4. Oil lubrication apparatus



Ref. No.	Part No.	Q'ty	Description
1	23-358	1	Felt
2	35-159	1	Oil Siphon Clamp
3	84-579	1	Screw
4	35-151	1	Siphon
5	84-361	1	Screw
6	35-154	1	Siphon Cap Disc Felt
7	35-155	1	Felt Plug
8	23-353	1	Felt Lint Filter
9	35-156	1	Oil Tube Connection
10	35-157	1	Oil Siphon Tube
11	84-364	1	Screw
12	35-158	1	Oil Tube Clamp

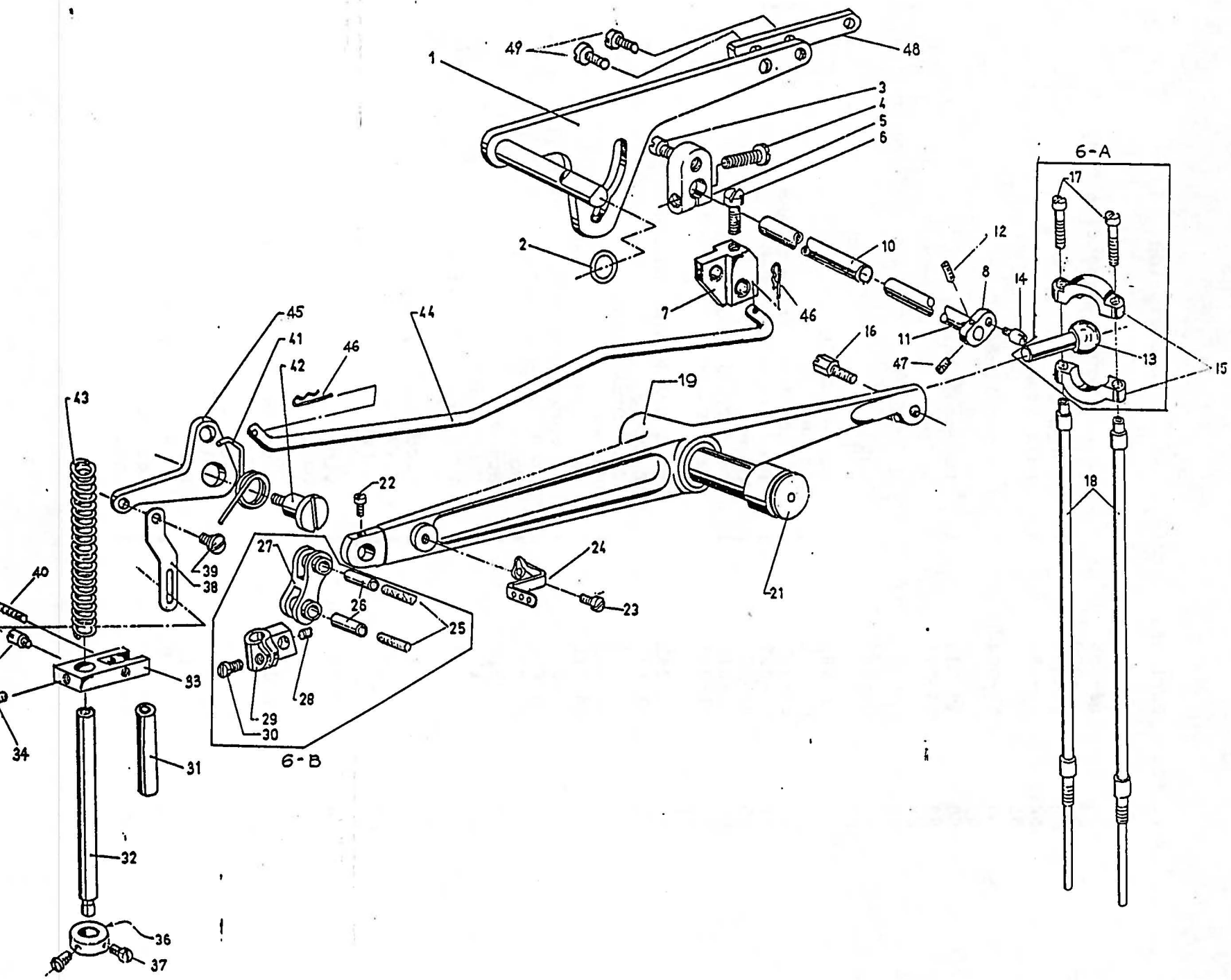
5. Crank, looper rocker, feed rocker components



Ref. No.	Part No.	Q'ty	Description
1			
2	61-351	1	Feed Drive Eccentric
3	63-313	1	Feed Drive Connection Link
4	84-711	1	Screw
5			
6	23-346	1	Felt
7			
8	61-316	1	Eccentric Sleeve
9	63-312	1	Looper Avoid Connecting Link
10	84-718	6	Screw
11			
12	23-346	1	Felt
13			
14	71-431	1	Link Pin
15	23-341	1	Felt
16	71-431	1	Link Pin
17	23-341	1	Felt
18	67-321	1	Feed Drive Lever
19	84-572	2	Screw
20	84-311	1	Screw
21	67-136	1	Looper Avoid Drive Lever
22	84-311	1	Screw
23	84-572	2	Screw
24			
25	71-814	1	Crankshaft
26	91-011	28	Needle Bearing for Crankshaft
27	63-331	1	Ball Joint for Crankshaft
28	84-568	2	Screw
29	63-513	1	Looper Lever Bearing
30	61-815	1	Ball Stud
31	84-573	2	Screw
32			
33			
34	69-123	1	Guide Fork
35	84-564	1	Screw
36	69-132	1	Looper Drive Lever
37	71-451	1	Locking Stud
38			
39	86-411	1	Nut
40	84-716	1	Screw
41	84-814	2	Screw
42	71-682	1	Looper Drive Lever Shaft
43	84-711	2	Screw
44	67-232	1	Looper Drive Lever Intermediate
45	84-712	1	Screw
46	84-574	1	Screw
47	86-413	1	Nut
48	75-458	1	Washer
49	85-211	1	Screw

Ref. No.	Part No.	Q'ty	Description
50			
51	63-806	1	Looper Lever Connection Rod
52	61-820	1	Ball Stud
53	84-379	4	Screw
54	61-806	1	Ball Stud
55			
56	71-904	1	Looper Rocker Cone
57			
58	19-330	1	Looper Rocker
59	84-511	1	Screw
60			
61			
62	86-414	1	Nut
63			
64	71-681	1	Looper Shaft
65	85-111	1	Screw
66	84-375	1	Stitch Regulating Screw
67	51-022	1	Feed Crank Stud Cap
68	84-161	2	Screw
69	51-012	1	Feed Crank Stud
70	71-711	1	Main Shaft
71			
72	75-242	1	Feed Crank Link Roller
73	91-421	1	Bearing
74	63-354	1	Feed Drive Link
75	75-452	1	Washer
76	86-411	1	Nut
77	71-666	1	Eccentric Stud
78	69-251	1	Feed Rocker, Right
79	84-715	4	Screw
80	84-511	2	Screw
81	55-111	1	Feed Bar
82	71-643	1	Feed Rocker Shaft
83			
84	69-252	1	Feed Rocker, Left
85	84-715	1	Screw
86	84-711	2	Screw
87			
88	85-132	1	Plug Screw
89	92-021	1	Ball
90	79-182	1	Spring
91	71-557	1	Feed Bar Driving Stud
92			
93	85-132	1	Plug Screw
94	92-021	1	Ball
95	79-182	1	Spring
96	71-556	1	Feed Bar Driving Stud
97	75-132	1	Collar
98	84-761	2	Screw

6. Needle level, foot lifter components

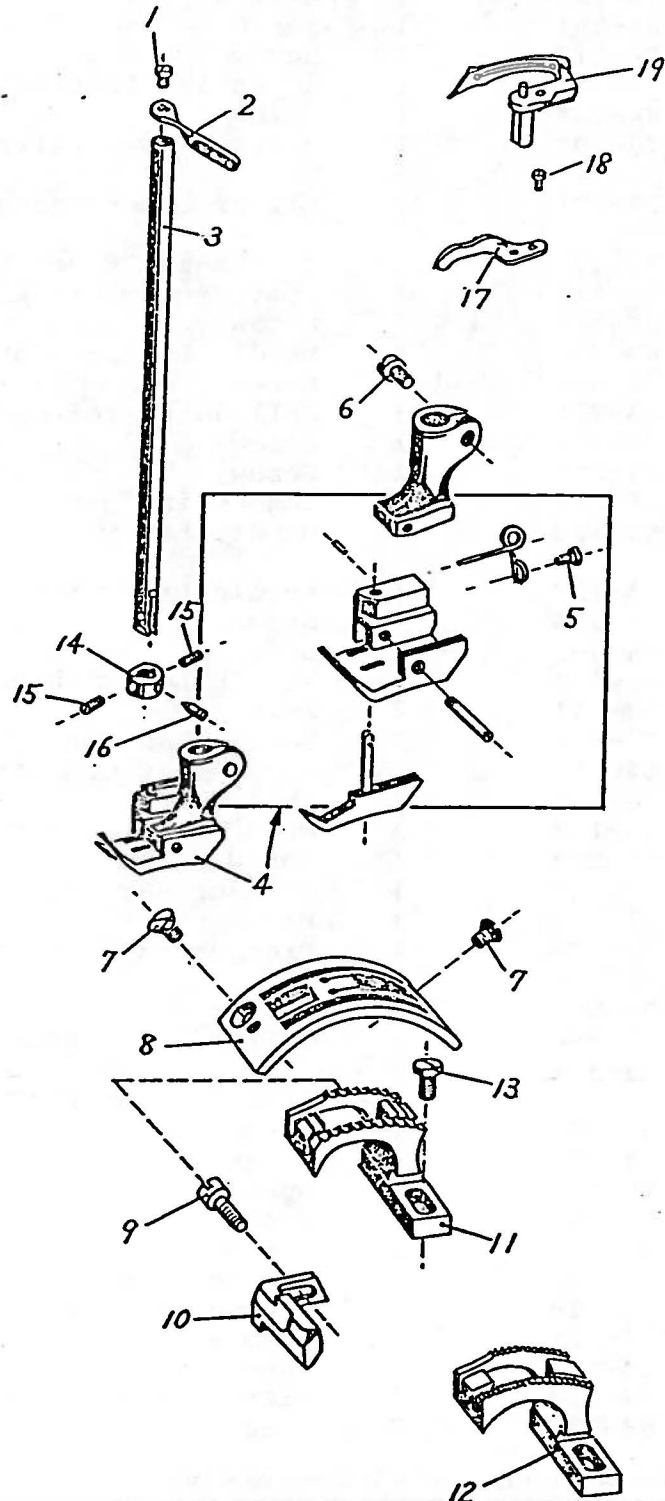


Ref. No.	Part No.	Q'ty	Description
1	77-144	1	Presser Lever Lifter Lever
2	23-189	1	O-Ring
3	84-561	1	Screw
4	84-812	1	Screw
5	77-103	1	Adjusting Post Supporter
6	84-764	1	Screw
7	77-107	1	Presser Foot Lifter Connecting Plate
8	77-101	1	Lifter Lever Connection
9			
10	77-122	1	Crankshaft Pipe
11	77-111	1	Foot Lifter Crankshaft
12	84-512	2	Screw
13	61-721	1	Needle Lever Connecting Rod
14	84-562	1	Screw
15	63-721	1	Ball Joint for Connecting Rod
16	85-211	1	Screw
17	84-586	2	Screw
18	65-312	2	Connecting Bar
19	69-103	1	Needle Lever
20			
21	71-932	1	Needle Lever Stud
22	84-364	1	Screw
23	84-567	1	Screw
24	45-118	1	Needle Lever Thread Eyelet
25	23-341	2	Felt
26	71-432	2	Needle Bar Connecting Link Pin
27	66-111	1	Needle Bar Connecting Link
28	84-365	1	Screw
29	73-113	1	Needle Bar Connection
30	84-564	1	Screw
31	71-545	1	Presser Bar Guide Bar
32	71-542	1	Presser Bar
33	77-176	1	Presser Bar Connection
34	84-571	1	Screw
35	84-561	1	Screw
36	75-154	1	Collar for Presser
37	84-511	2	Screw
38	77-131	1	Lifter Lever Ring
39	84-581	1	Screw
40	84-411	1	Screw
41	79-221	1	Spring
42	84-781	1	Screw
43	79-121	1	Presser Bar Spring
44	77-120	1	Presser Foot Connection
45	77-109	1	Presser Foot Lifter Lever
46	93-611	1	Snap Pin
47	84-513	1	Screw
48	77-129	1	Lifter Lever Adapter
49	84-716	2	Screw

6-A Needle lever connecting ass'y

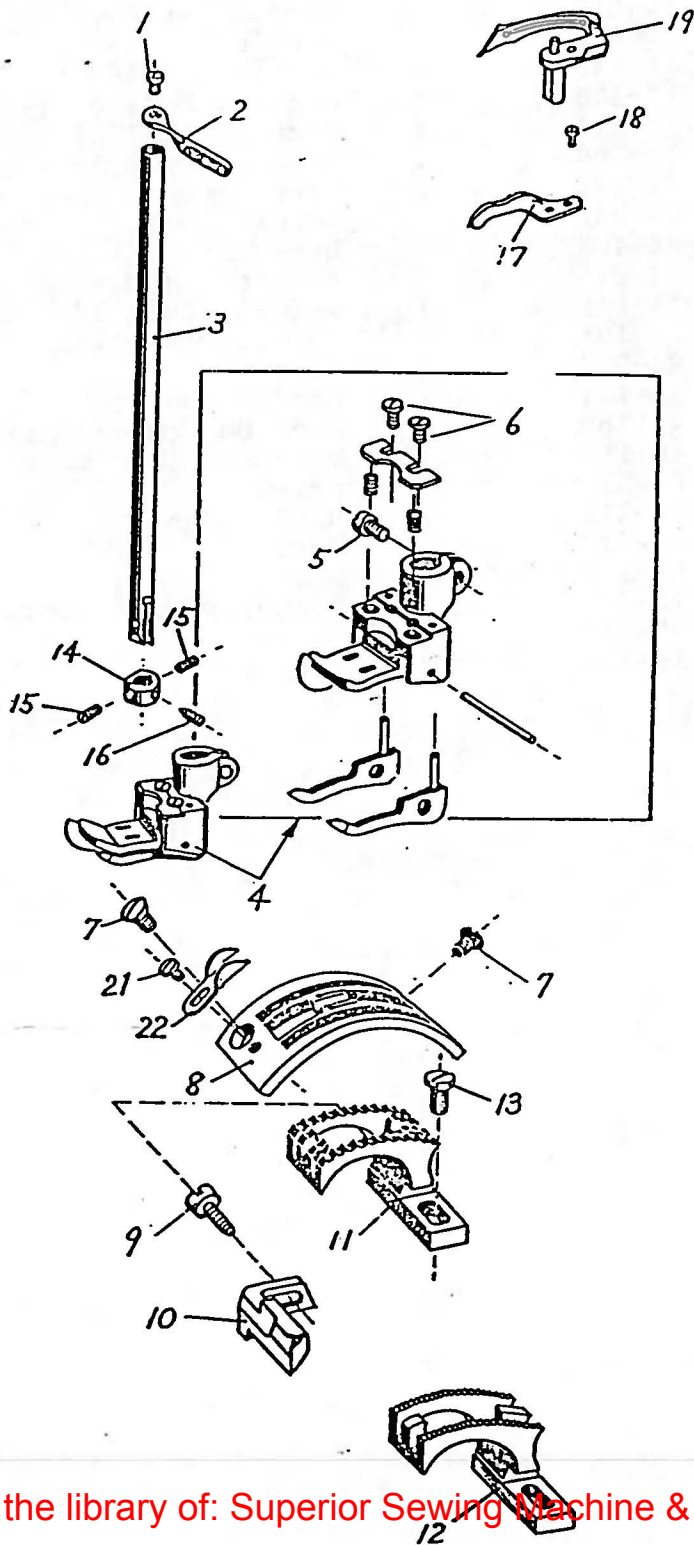
6-B Needle lever connecting link ass'y

7. Gauge parts (102A)



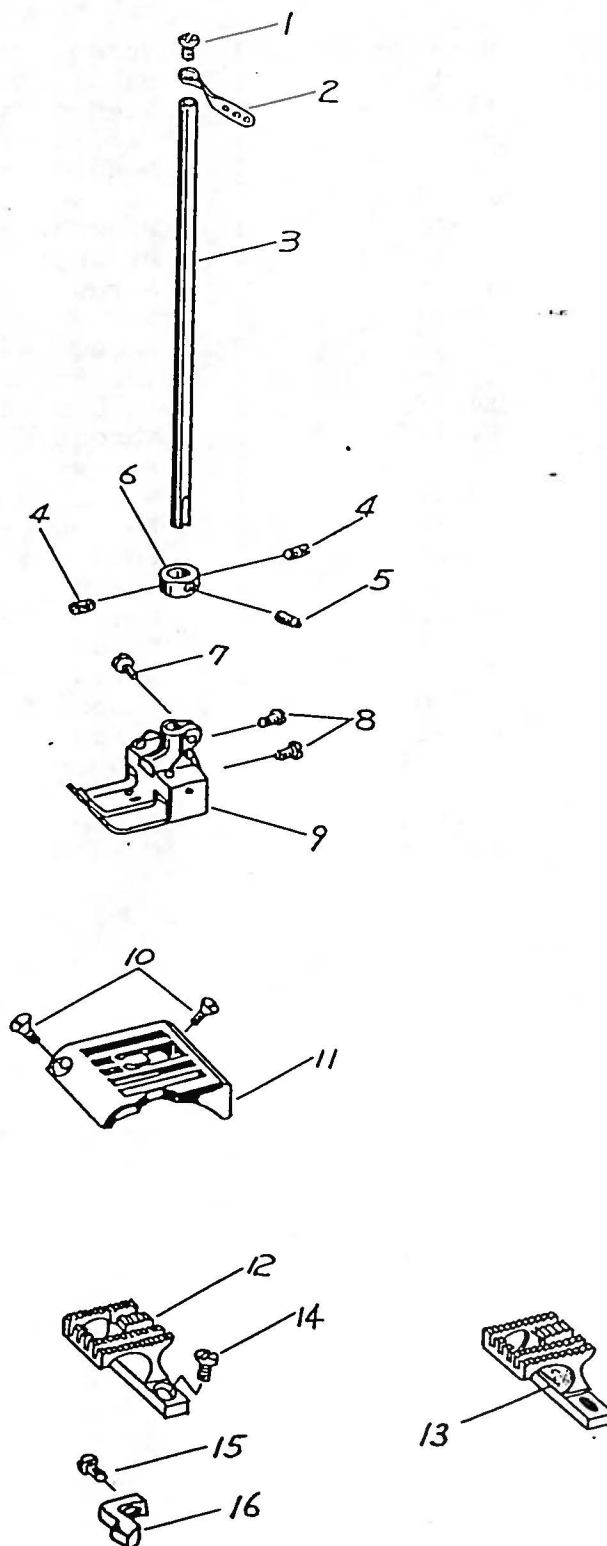
Ref. No.	Part No.	Q'ty	Description
1	84-362	1	Screw
2	45-131	1	Needle Lever Thread Eyelet
3	11-111	1	Needle Bar 8
	11-113	1	Needle Bar 12
	11-115	1	Needle Bar 16
4	17-125	1	Presser Foot 8
	17-145	1	Presser Foot 12
	17-165	1	Presser Foot 16
5	84-161	1	Screw
6	84-382	1	Screw
7	84-462	2	Screw
8	14-125	1	Throat Plate 8
	14-145	1	Throat Plate 12
	14-165	1	Throat Plate 16
9	84-564	1	Screw
10	18-111	1	Needle Guard
11	15-165	1	Feed Dog (Wider pitch)
12	15-155	1	Feed Dog (Narrower pitch)
13	84-511	1	Screw
14	12-111	1	Needle Head
15	84-513	2	Screw
16	84-511	1	Screw
17	18-101	1	Looper Needle Guard
18	85-611	1	Screw
19	19-101	1	Looper

8. Gauge parts (102C)



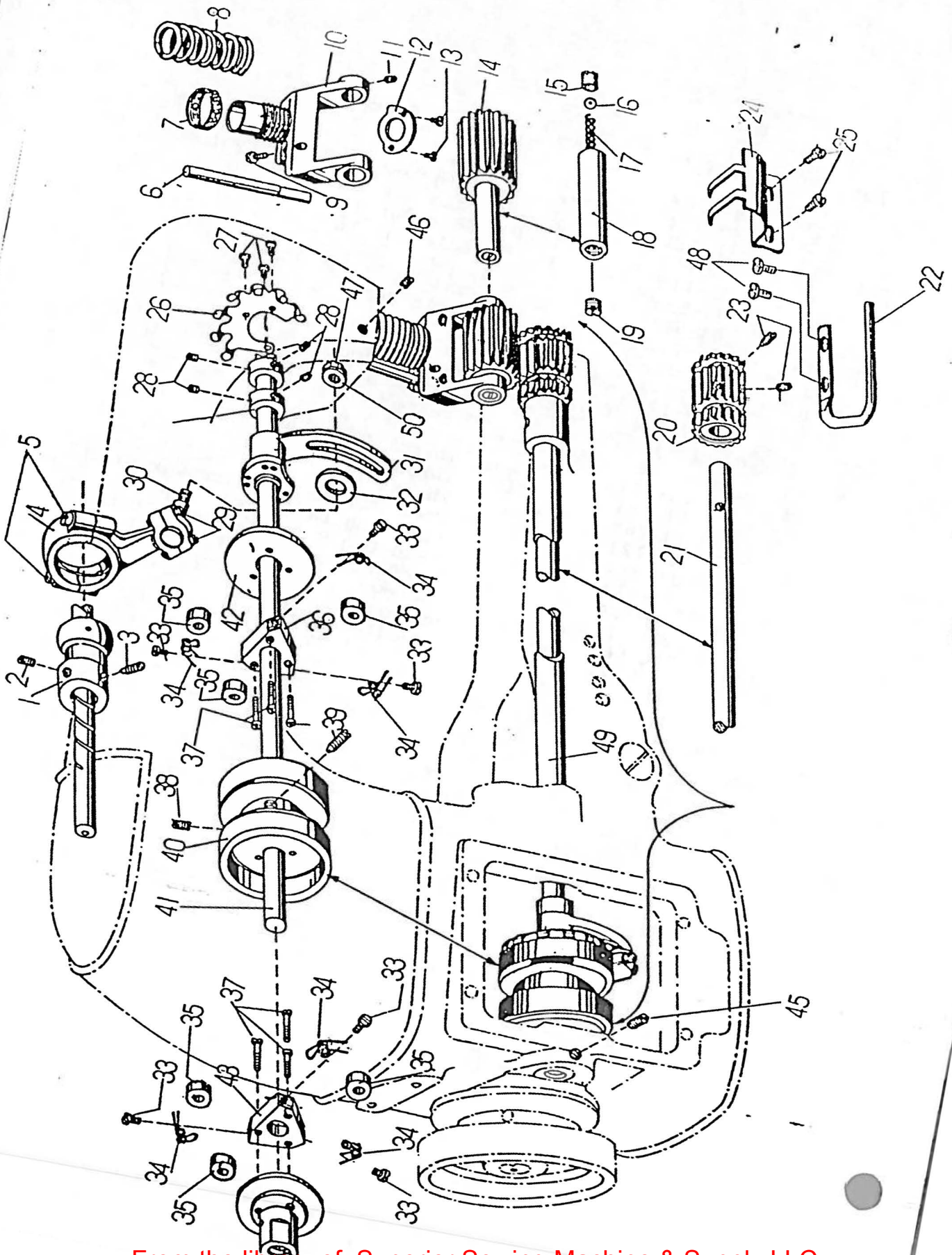
Ref. No.	Part No.	Q'ty	Description
1	84-362	1	Screw
2	45-131	1	Needle Lever Thread Eyelet
3	11-111	1	Needle Bar 8
	11-113	1	Needle Bar 12
	11-115	1	Needle Bar 16
4	17-146	1	Presser Foot 12
	17-156	1	Presser Foot 14
	17-166	1	Presser Foot 16
5	84-161	1	Screw
6	85-611	2	Screw
7	84-462	2	Screw
8	14-146	1	Throat Plate 12
	14-156	1	Throat Plate 14
	14-166	1	Throat Plate 16
9	84-564	1	Screw
10	18-111	1	Needle Guard
11	15-166	1	Feed Dog (Wider pitch)
12	15-156	1	Feed Dog (Narrower pitch)
13	84-511	1	Screw
14	12-111	1	Needle Head
15	84-513	2	Screw
16	84-511	1	Screw
17	18-101	1	Looper Needle Guard
18	85-611	1	Screw
19	19-101	1	Looper
21	84-163	1	Screw
22	26-111	1	Seam Guide

9. Gauge parts (102P)



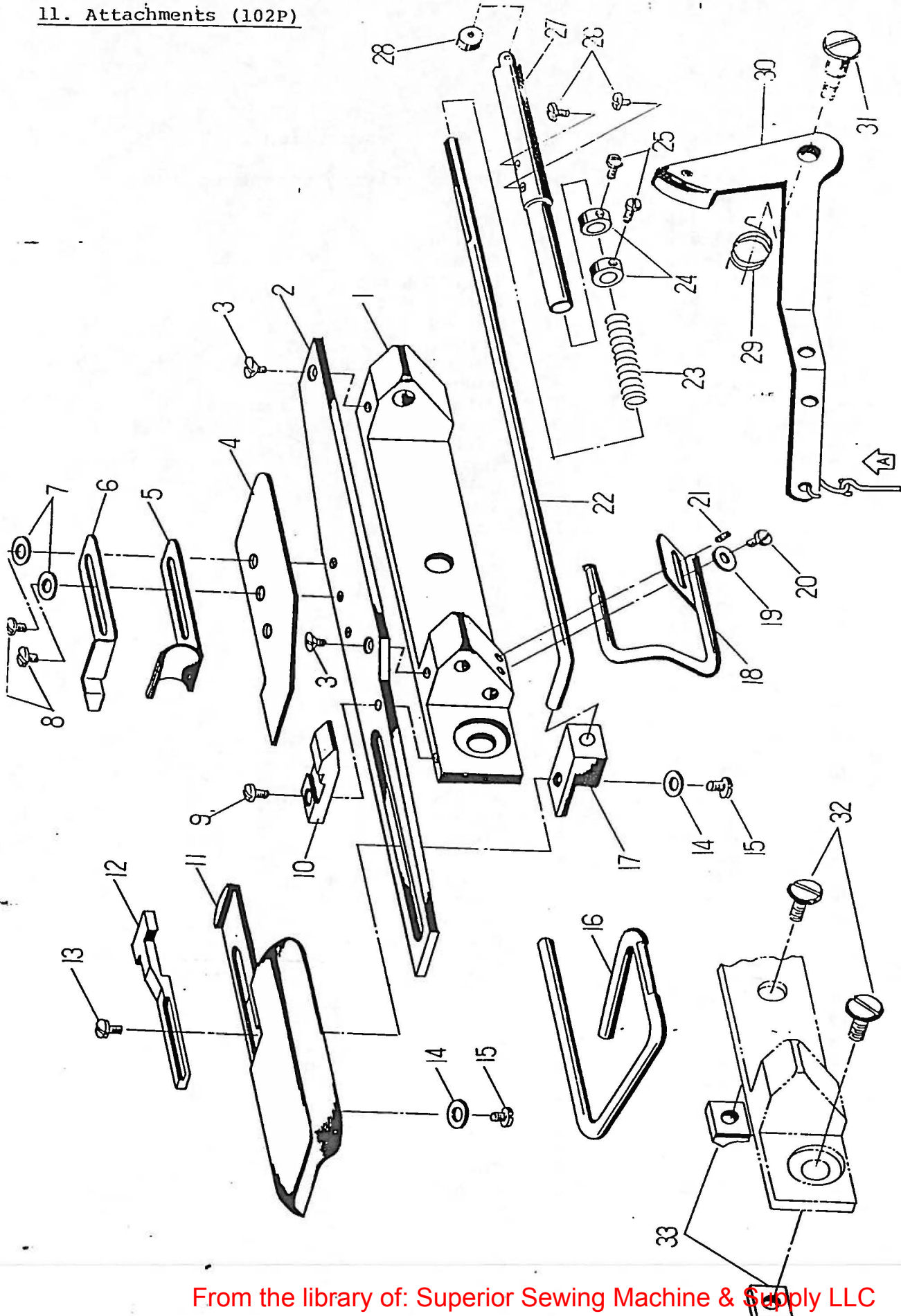
Ref. No.	Part No.	Q'ty	Description
1	84-362	1	Screw
2	45-131	1	Needle Lever Thread Eyelet
3	11-111	1	Needle Bar 8
	11-113	1	Needle Bar 12
	11-115	1	Needle Bar 16
4	84-513	2	Screw
5	84-511	1	Screw
6	12-111	1	Needle Head
7	84-382	1	Screw
8	85-621	2	Screw
9	17-124	1	Presser Foot 8
	17-144	1	Presser Foot 12
	17-164	1	Presser Foot 16
10	84-462	2	Screw
11	14-124	1	Throat Plate 8
	14-144	1	Throat Plate 12
	14-164	1	Throat Plate 16
12	15-124	1	Feed Dog 8, 12 (Narrower pitch)
	15-164	1	Feed Dog 16 (Narrower pitch)
13	15-114	1	Feed Dog 8, 12 (Wider pitch)
	15-154	1	Feed Dog 16 (Wider pitch)
14	84-511	1	Screw
15	84-564	1	Screw
16	18-111	1	Needle Guard

10. Rear puller components



Ref. No.	Part No.	Q'ty	Description
1	61-526	1	Puller Driving Eccentric
2	84-716	1	Screw
3	84-718	1	Screw
4	63-526	1	Ball Joint
5	84-568	2	Screw
6	02-523	1	Puller Liner
7	02-526	1	Puller Nut
8	02-527	1	Spring
9	84-582	1	Screw
10	02-531	1	Puller Holder
11	84-511	1	Screw
12	02-534	1	Puller Holder Collar
13	84-164	2	Screw
14	02-541	1	Puller Gear
15	85-132	1	Screw
16	92-021	1	Ball
17	79-182	1	Spring
18	71-654	1	Puller Shaft
19	85-111	1	Screw
20	02-551	1	Puller Gear
21	71-632	1	Puller Driving Shaft
22	02-561	1	Guide Bar
23	84-511	2	Screw
24	02-539	1	Puller Cover
25	84-161	2	Screw
26	02-522	1	Spring
27	84-162	3	Screw
28	84-511	4	Screw
29	84-572	2	Screw
30	61-817	1	Rod
31	02-521	1	Puller Driving Lever
32	75-396	1	Washer
33	84-161	6	Screw
34	02-513	6	Spring
35	02-514	6	Check Clutch Roller
36	02-512	1	Check Clutch, Left
37	84-166	6	Screw
38	84-718	1	Screw
39	84-718	1	Screw
40	02-502	1	Check Clutch Case
41	71-632	1	Puller Drive Shaft
42	02-503	1	Check Clutch Disc
43	02-511	1	Check Clutch, Right
44	02-501	1	Check Clutch Cap
45	84-512	1	Screw
46	84-512	1	Screw
47	86-311	1	Nut
48	84-363	2	Screw
49	02-538	1	Shaft Pipe
50	75-456	1	Washer

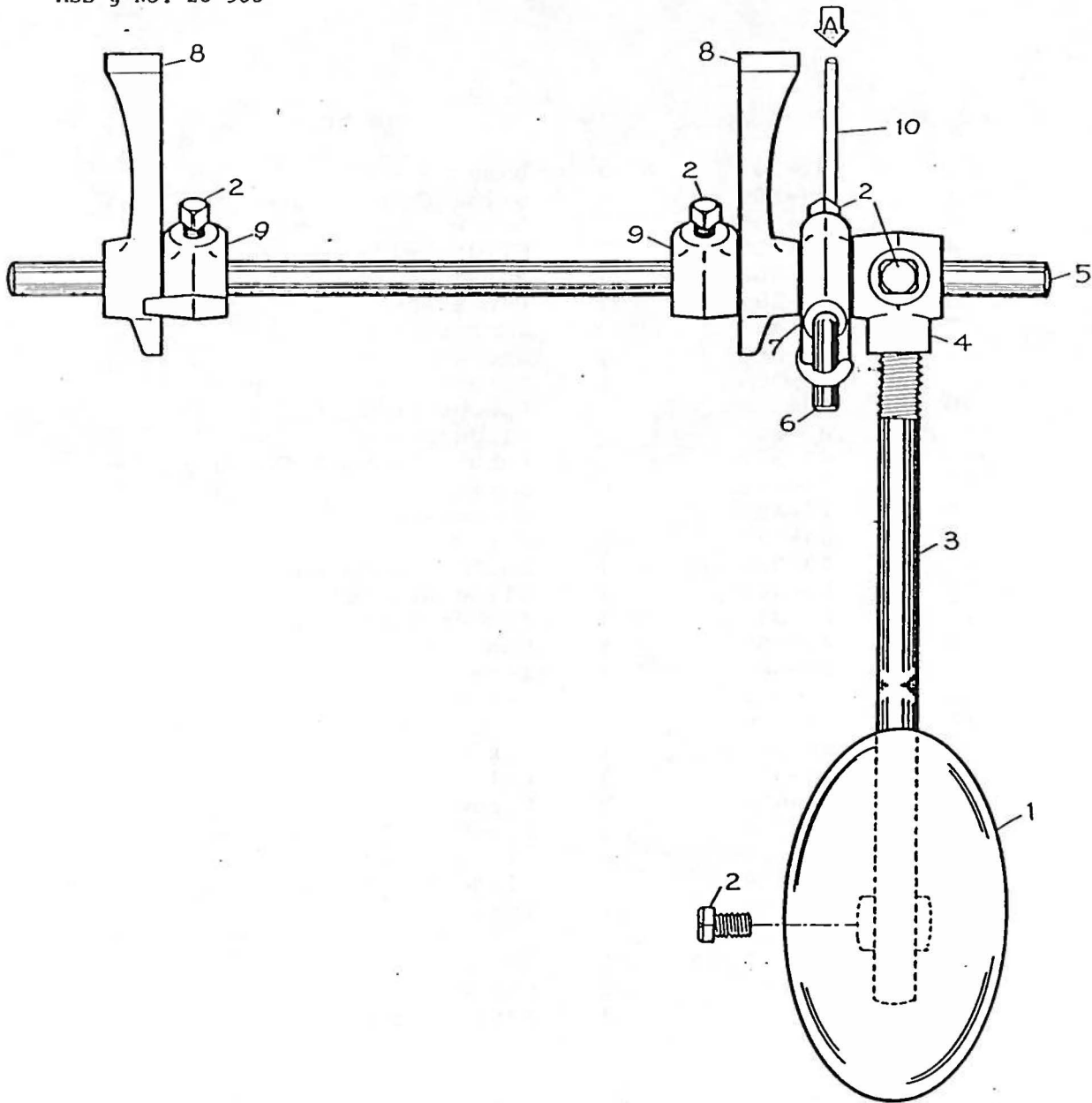
11. Attachments (102P)



Ref. No.	Part No.	Q'ty	Description
1	09-301	1	Base
2	09-302	1	Slide Guide Plate
3	84-664	2	Screw
4	09-305	1	Slide Guide Plate
5	09-306	1	Rubber Guide A
6	09-307	1	Rubber Guide B
7	75-460	2	Washer
8	84-566	2	Screw
9	84-363	1	Screw
10	09-308	1	Rubber Guide C
11	09-303	1	Slide Base
12	09-312	1	Rubber Support Guide B
13	84-361	1	Screw
14	75-453	2	Washer
15	84-571	2	Screw
16	09-335	1	Rubber Guide Bar
17	09-321	1	Slide Bracket
18	09-331	1	Rubber Guide Bar
19	75-455	1	Washer
20	84-361	1	Screw
21	84-312	1	Screw
22	09-326	1	Guide Shaft
23	09-327	1	Spring
24	09-330	2	Collar
25	84-616	2	Screw
26	84-364	2	Screw
27	09-328	1	Slide Bar
28	09-329	1	Slide Bar Roller
29	09-334	1	Spring
30			
31	85-672	1	Screw
32	85-182	2	Screw
33	09-332	2	Base Spacer

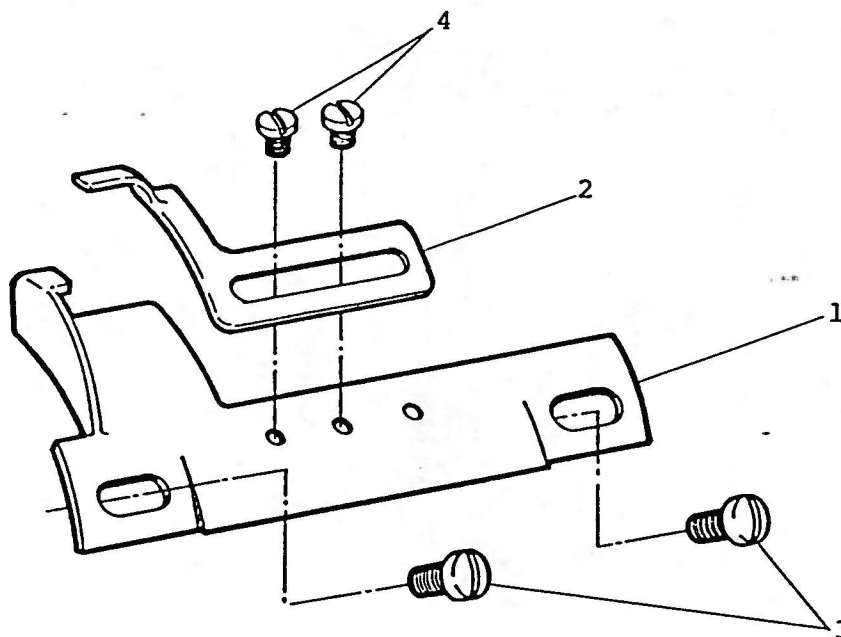
11-2. Attachments (102P) Foot Lifter

Ass'y No. 28-900



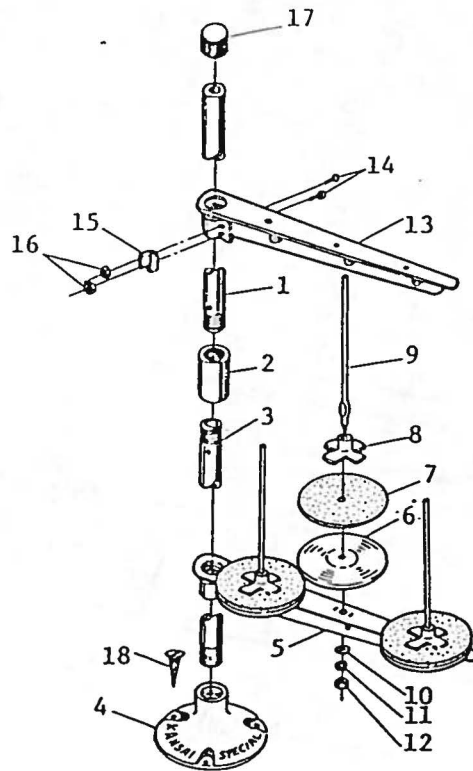
Ref. No.	Part No.	Q'ty	Description
1	28-911	1	Knee controller
2	87-671	5	Screw
3	28-912	1	Knee controller bar
4	28-913	1	Knee controller bracket
5	28-919	1	Bar
6	28-914	1	Stopper arm
7	28-915	1	Stopper
8	28-916	2	Base
9	28-917	2	Stopper
10	28-920	1	Chain

12. Attachments



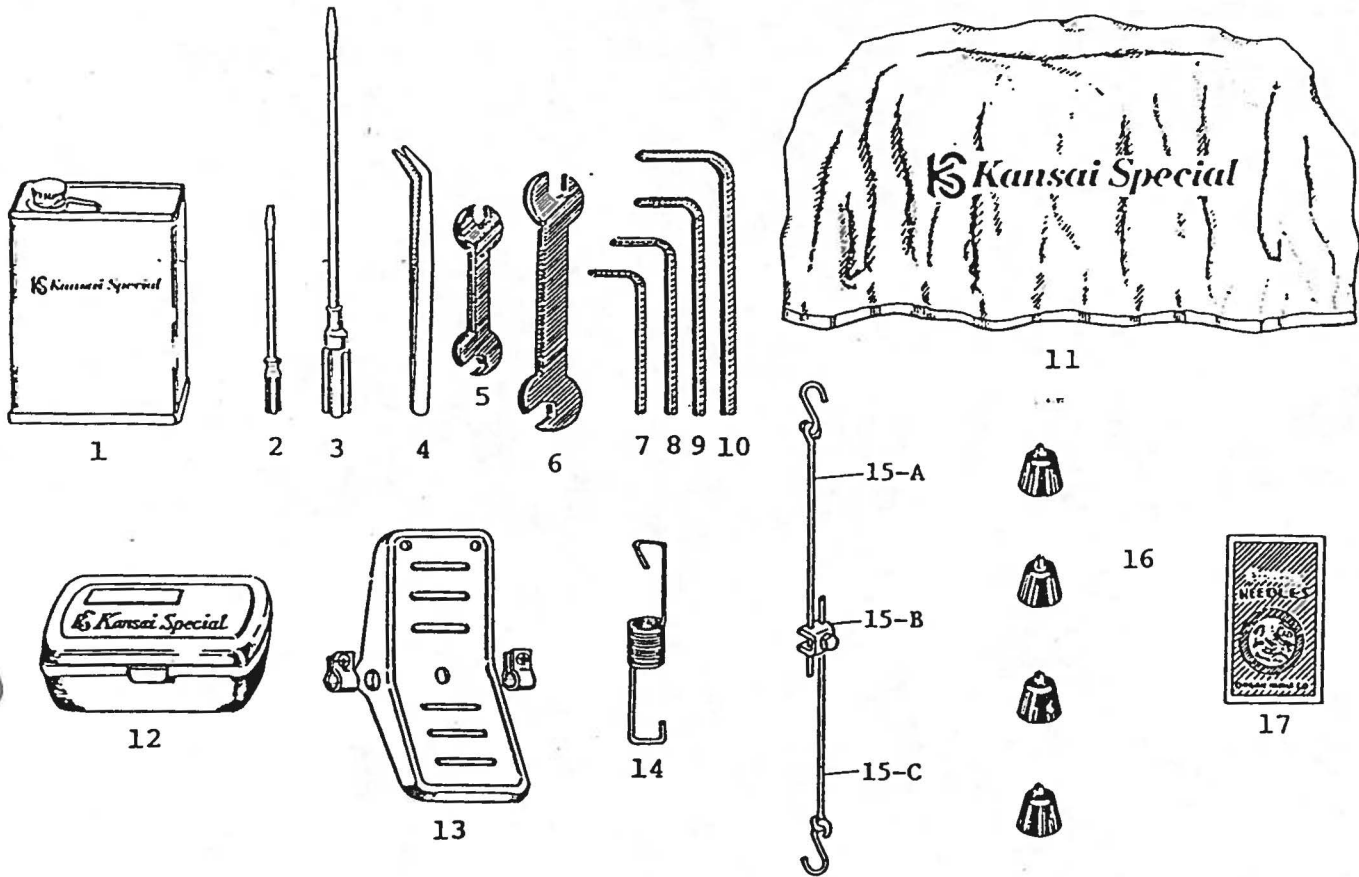
Ref. No.	Part No.	Q'ty	Description
1	26-116	1	Large guide
2	26-117	1	Small guide
3	85-118	2	Screw
4	84-364	2	Screw

13. Thread stand



Ref. No.	Part No.	Q'ty	Description
1	42-113	1	Bar (upper)
2	42-114	1	Collar
3	42-112	1	Bar (low)
4	42-111	1	Base
5	42-115	1	Spool pin bracket
6	42-123	3	Spool tray
7	42-119	1	Thread cushion
8	42-118	3	Spool retaining fin
9			Spool pin
10	42-117	3	Washer
11			Nut spring washer
12			Nut
13	42-116	1	Thread guide bracket
14			Screw
15	42-121	2	Angle washer
16			Nut
17	42-120	1	Cup
18	42-122	3	Screw

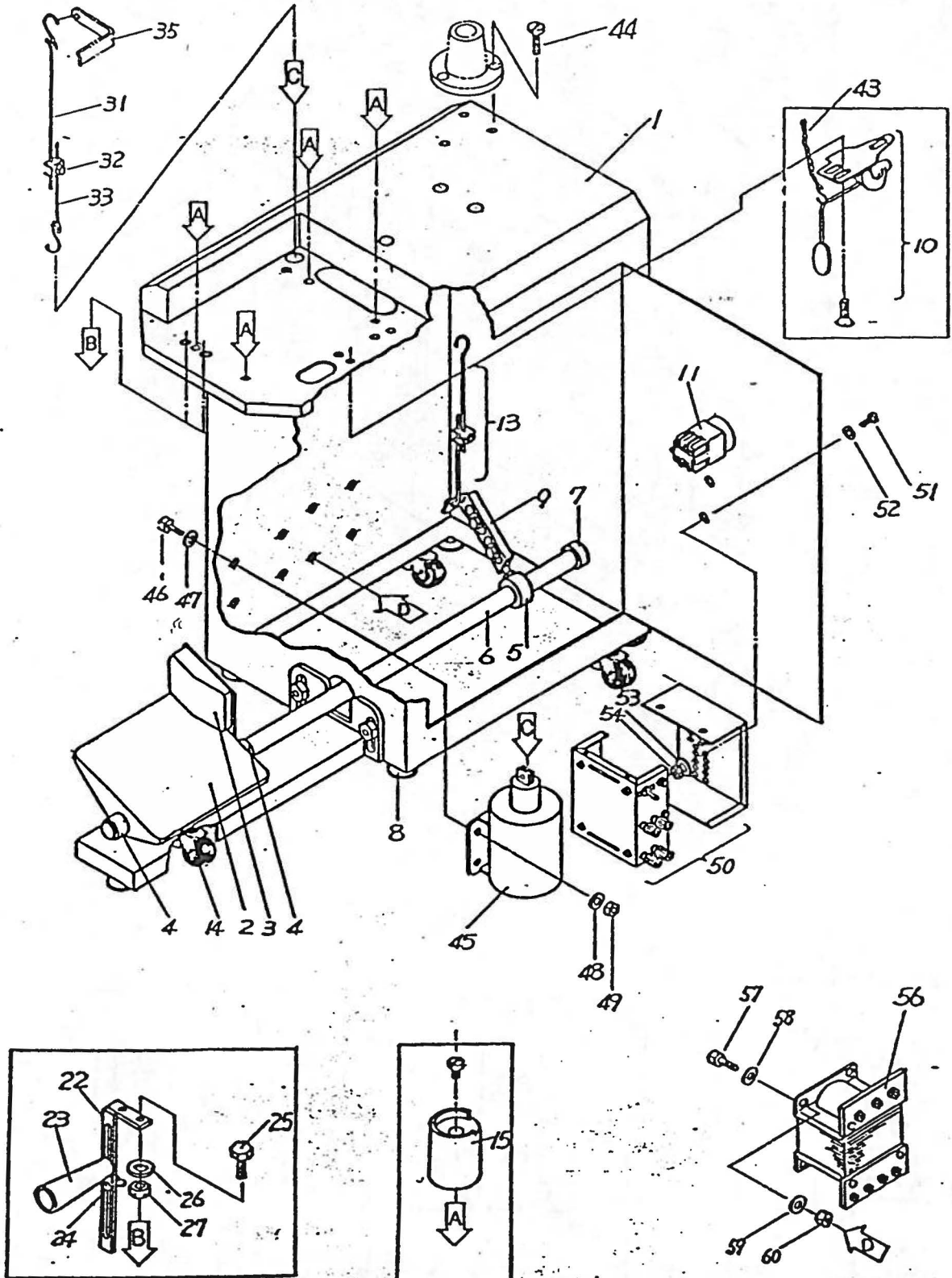
14. Accessories



Ref. No.	Part No.	Q'ty	Description
1	28-611	1	Oil (ESSO TELESSO33)
2	28-451	1	Small driver ..
3	28-452	1	Driver
4	28-011	1	Tweezer
5	28-421	1	Spanner
6	28-422	1	Spanner
7	28-311	1	Wrench
8	28-312	1	Wrench
9	28-313	1	Wrench
10	28-314	1	Wrench
11	28-021	1	Machine cover
12	28-001	1	Accessory box
13	77-011	1	Pedal for foot lifter
14	77-003	1	Spring for pedal
15	A-77-007		
	B-77-005	1	Pitman for machine
	C-77-006		
16	31-162	4	Gum cushion
	13-012 (#12)		
	13-014 (#14)		
17	13-016 (#16)	1	Needle (No. 4 #13-16)
	13-018 (#18)		

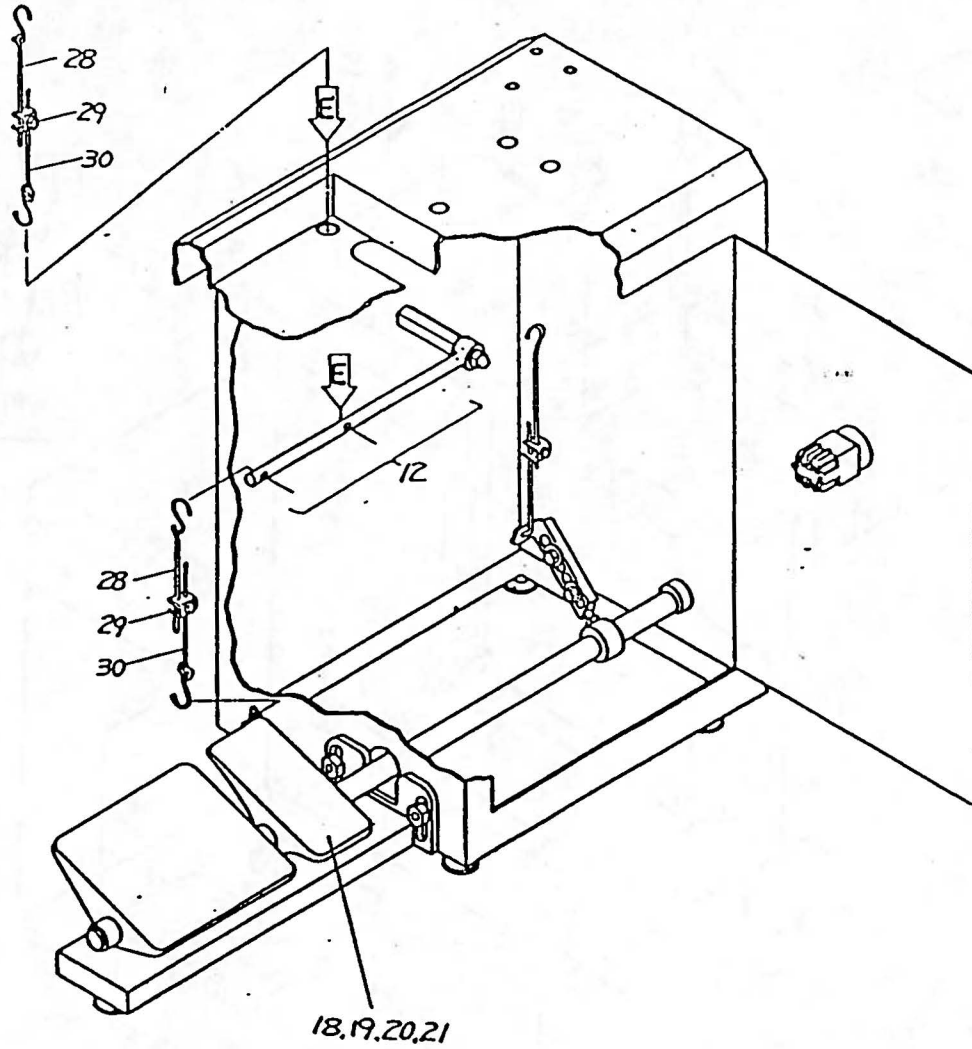
15. PS-1

Pedestal stand(PS-1) with automatic foot lifter(FL-1)

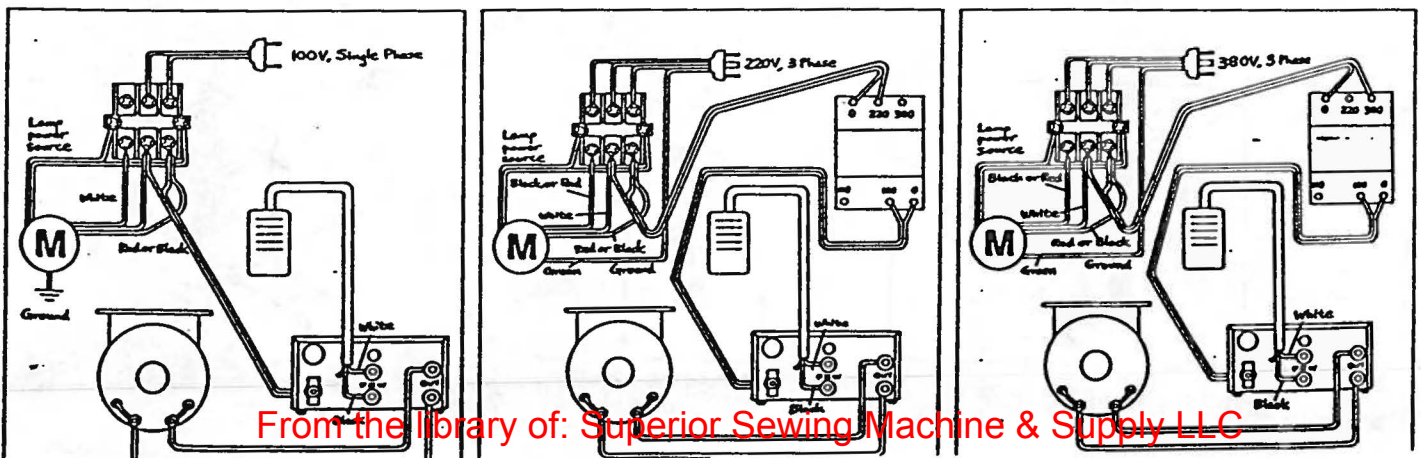


Pedestal stand(PS-1) with foot lifter

0, 7



Wiring Diagram



Ref. No.	Part No.	Q'ty	Description
1	21-097	1	Table
2	P-01	1	Motor Pedal (Set)
3	P-02	1	Foot Switch ("
4	P-03	3	Collar ("
5	P-04	1	Collar ("
6	P-05	1	Shaft ("
7	P-06	2	Collar ("
8	P-07	5	Foot ("
9	P-08	1	Motor Lever ("
10	P-09	1	Foot Lifter ("
11	P-10	1	Main Switch ("
12	P-11	1	
13	P-12	1	Pitman Arm ("
14	P-13	3	Caster
15	25-091	4	Cushion Base
17	87-150	4	Screw
18	77-001	1	
19	77-002	1	Collar ("
20	77-003	1	Spring ("
21	77-004	1	Pedal Lever ("
22	09-136	1	Roller Bracket
23	09-181	1	Roller
24	09-182	1	Screw
25	87-661	2	Screw
26	75-451	2	Washer
27	88-176	2	Nut
28	77-006	2	Rod
29	77-005	2	Connecting
30	77-006	2	Rod
31	77-006	1	Rod
32	77-005	1	Connecting
33	77-007	1	Rod
34	77-281	1	Lever (for DVC)
43		1	Chain
44	87-158	3	Screw
45	77-257	1	Solenoid
46	87-164	4	Screw
47	75-452	4	Washer
48	75-452	4	Washer
49	88-166	4	Nut
50	77-256	1	Control Box
51	87-150	2	Screw
52	75-455	2	Washer
53	75-455	2	Washer
54	88-146	2	Nut
55			Cord
56		1	Transformer
57	87-164	4	Screw
58	75-452	4	Washer
59	75-452	4	Washer
60	88-166	4	Nut

9 112.4